

**ITEM 43. CAR SHARE – CRESCENT STREET REDFERN**

**TRIM RECORD NO: 2016/289248**

**RECOMMENDATION**

It is recommended that the Committee endorse the extension to the existing car share space on the northern side of Crescent Street, Redfern between the points 45 metres and 49 metres (one car space) east of Bourke Street as 'No Parking Car Share Vehicles Excepted' subject to the following:-

- (A) The City will only install signage for the car share space when GoGet has a car to occupy the space.

**VOTING MEMBERS FOR THIS ITEM**

<b><i>Voting Members</i></b>	<b><i>Support</i></b>	<b><i>Object</i></b>
City of Sydney		
Roads and Maritime Services		
NSW Police – Redfern LAC		
Representative for the Member for Newtown		

**DECISION**

**BACKGROUND**

The City is committed to providing dedicated parking for car sharing across the Local Government Area as part of a Council approved Car Share Policy. A submission has been received from GoGet for a car share space in Crescent Street, Redfern, east of Bourke Street.

**COMMENTS**

The kerb space on the northern side of Crescent Street, Redfern between Bourke and South Dowling Streets is currently unrestricted for parking and signposted with “No Parking Car Share Vehicles Excepted”. This proposal will extend the existing car share bay in Concord Street to form a double pod.

The car share space will be installed and managed in accordance with the Roads and Maritime Service’s Technical Direction 2007/04 and the provisions of the Council-approved Car Share Policy.

Car sharing is popular in more than 600 cities worldwide, and research has shown substantial environmental benefits. Car sharing reduces total urban driving, reduces household vehicle holdings, and increases walking, cycling and public transport use.

Current membership is approximately 29,084, of which 8,356 are business members.

As of May 2016, there were 137 GoGet car share members within a 250 metre radius of this location with 54 members in Crescent Street, 22 members in Bourke Street, and 10 members in Crystal Street.

Within a 250 metre radius of this location, there are currently ten spaces allocated for GoGet car share vehicles.

### **CONSULTATION**

The City consulted local residents and businesses in the area. There were 242 letters sent out with one response supporting the proposal and two responses opposing the proposal due to the loss of parking and that the number of spaces already dedicated to car sharing in the local area is sufficient.

The adjacent properties are apartment buildings with off-street parking. The resident supporting the proposal is a car share member and supports the scheme being extended to provide an alternative to private car ownership and reducing the number of cars around the City.

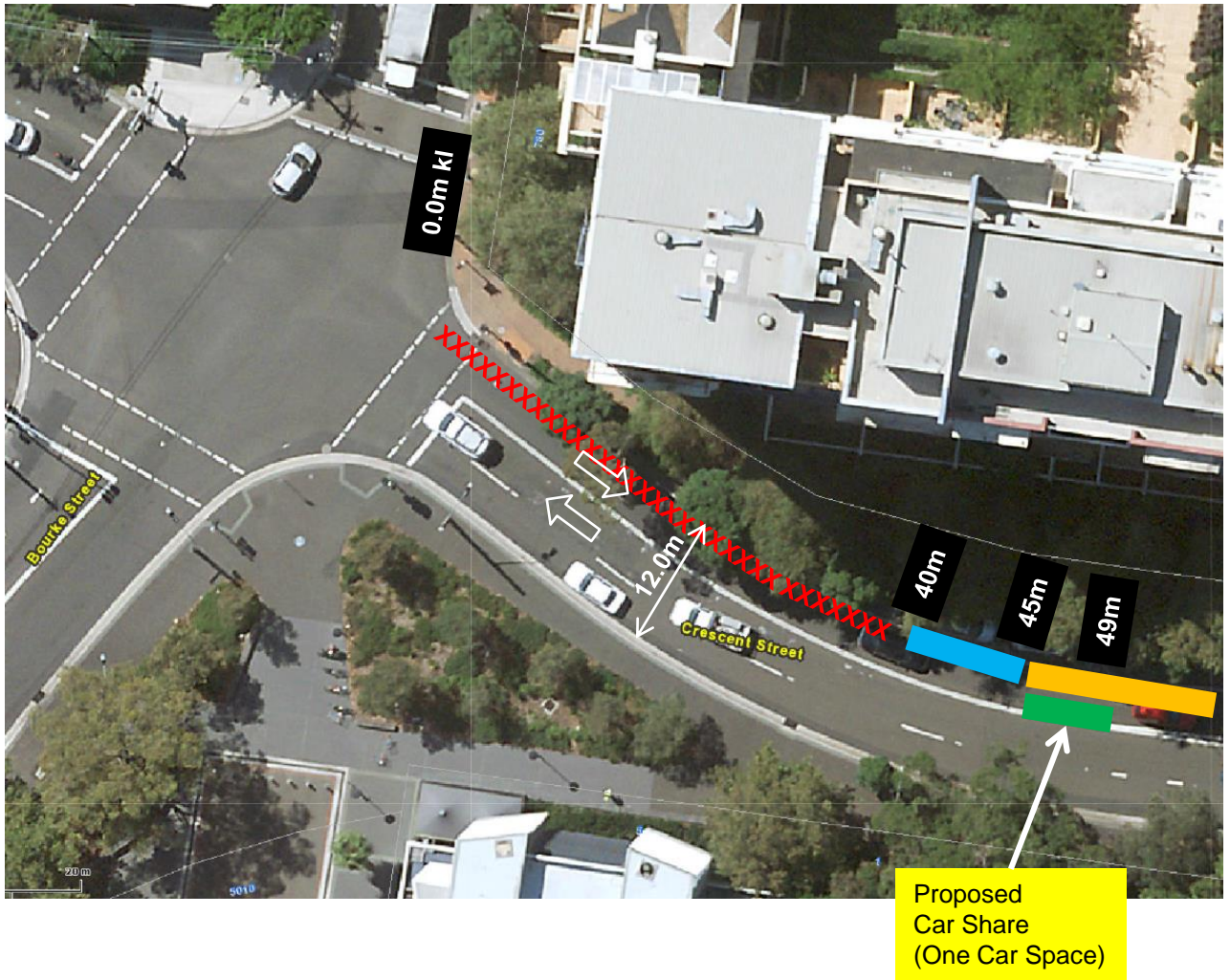
### **FINANCIAL**

Funds are available in the current budget.

### **ATTACHMENTS**

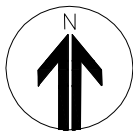
Car Share – Crescent Street Redfern

Claudia Calabro, Business Support Officer



**LEGEND:**

- Proposed "No Parking Car Share Vehicles Excepted Zone GG"
- Existing "No Stopping"
- Existing "No Parking Car Share Vehicles Excepted Zone GG"
- Existing "Unrestricted Parking"



PROPOSAL

CRESCENT STREET, REDFERN  
PROPOSED CAR SHARE



